

CKM Antibody (C-term)
Purified Rabbit Polyclonal Antibody (Pab)
Catalog # AP7073b**Specification**

CKM Antibody (C-term) - Product Information

Application	FC, IHC-P, WB,E
Primary Accession	P06732
Other Accession	P00563 , Q5XLD3 , Q9XSC6
Reactivity	Human
Predicted	Bovine, Pig, Rabbit
Host	Rabbit
Clonality	Polyclonal
Isotype	Rabbit IgG
Antigen Region	283-313

CKM Antibody (C-term) - Additional Information**Gene ID** 1158**Other Names**

Creatine kinase M-type, Creatine kinase M chain, M-CK, Creatine kinase M-type, N-terminally processed, CKM, CKMM

Target/Specificity

This CKM antibody is generated from rabbits immunized with a KLH conjugated synthetic peptide between 283-313 amino acids from the C-terminal region of human CKM.

Dilution

FC~~1:10~50

IHC-P~~1:50~100

WB~~1:1000

E~~Use at an assay dependent concentration.

Format

Purified polyclonal antibody supplied in PBS with 0.09% (W/V) sodium azide. This antibody is prepared by Saturated Ammonium Sulfate (SAS) precipitation followed by dialysis against PBS.

Storage

Maintain refrigerated at 2-8°C for up to 2 weeks. For long term storage store at -20°C in small aliquots to prevent freeze-thaw cycles.

Precautions

CKM Antibody (C-term) is for research use only and not for use in diagnostic or therapeutic procedures.

CKM Antibody (C-term) - Protein Information

Name CKM

Synonyms CKMM

Function Reversibly catalyzes the transfer of phosphate between ATP and various phosphogens (e.g. creatine phosphate). Creatine kinase isoenzymes play a central role in energy transduction in tissues with large, fluctuating energy demands, such as skeletal muscle, heart, brain and spermatozoa.

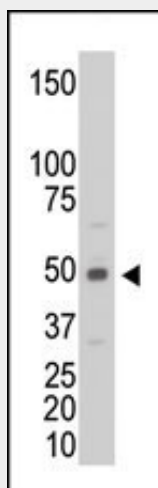
Cellular Location
Cytoplasm.

CKM Antibody (C-term) - Protocols

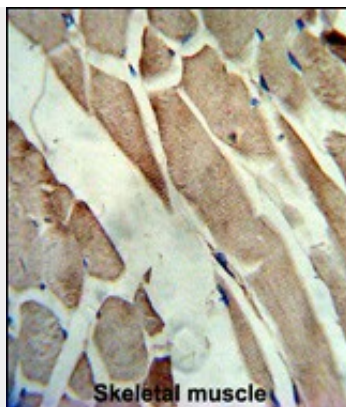
Provided below are standard protocols that you may find useful for product applications.

- [Western Blot](#)
- [Blocking Peptides](#)
- [Dot Blot](#)
- [Immunohistochemistry](#)
- [Immunofluorescence](#)
- [Immunoprecipitation](#)
- [Flow Cytometry](#)
- [Cell Culture](#)

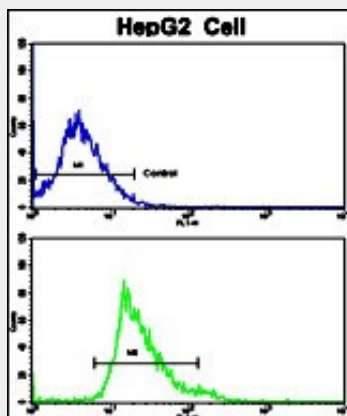
CKM Antibody (C-term) - Images



The anti-CKM Pab (Cat. #AP7073b) is used in Western blot to detect CKM in C6 cell lysate.



Formalin-fixed and paraffin-embedded human skeletal muscle reacted with the primary antibody, which was peroxidase-conjugated to the secondary antibody, followed by AEC staining. This data demonstrates the use of this antibody for immunohistochemistry; clinical relevance has not been evaluated. BC = breast carcinoma; HC = hepatocarcinoma.



Flow cytometric analysis of HepG2 cells using Creatine Kinase MB (CKM) Antibody (C-term)(bottom histogram) compared to a negative control cell (top histogram). FITC-conjugated goat-anti-rabbit secondary antibodies were used for the analysis.

CKM Antibody (C-term) - Background

Creatine kinase isoenzymes play a central role in energy transduction in tissues with large, fluctuating energy demands, such as skeletal muscle, heart, brain and spermatozoa. The CKM isoform, predominant in skeletal muscle and heart tissue, is a cytoplasmic enzyme involved in energy homeostasis and is an important serum marker for myocardial infarction. CKM reversibly catalyzes the transfer of phosphate between ATP and various phosphogens such as creatine phosphate. It acts as a homodimer in striated muscle as well as in other tissues, and as a heterodimer with a similar brain isozyme in heart. The encoded protein is a member of the ATP:guanido phosphotransferase protein family.

CKM Antibody (C-term) - Citations

- [Regulation of sodium-calcium exchanger activity by creatine kinase under energy-compromised conditions.](#)